

N.E. 1/4 OF
SECTION 33, T.7N., R.1W., S.L.B. & M.

IN NORTH OGDEN CITY & WEBER COUNTY

PREFIX: 17-073

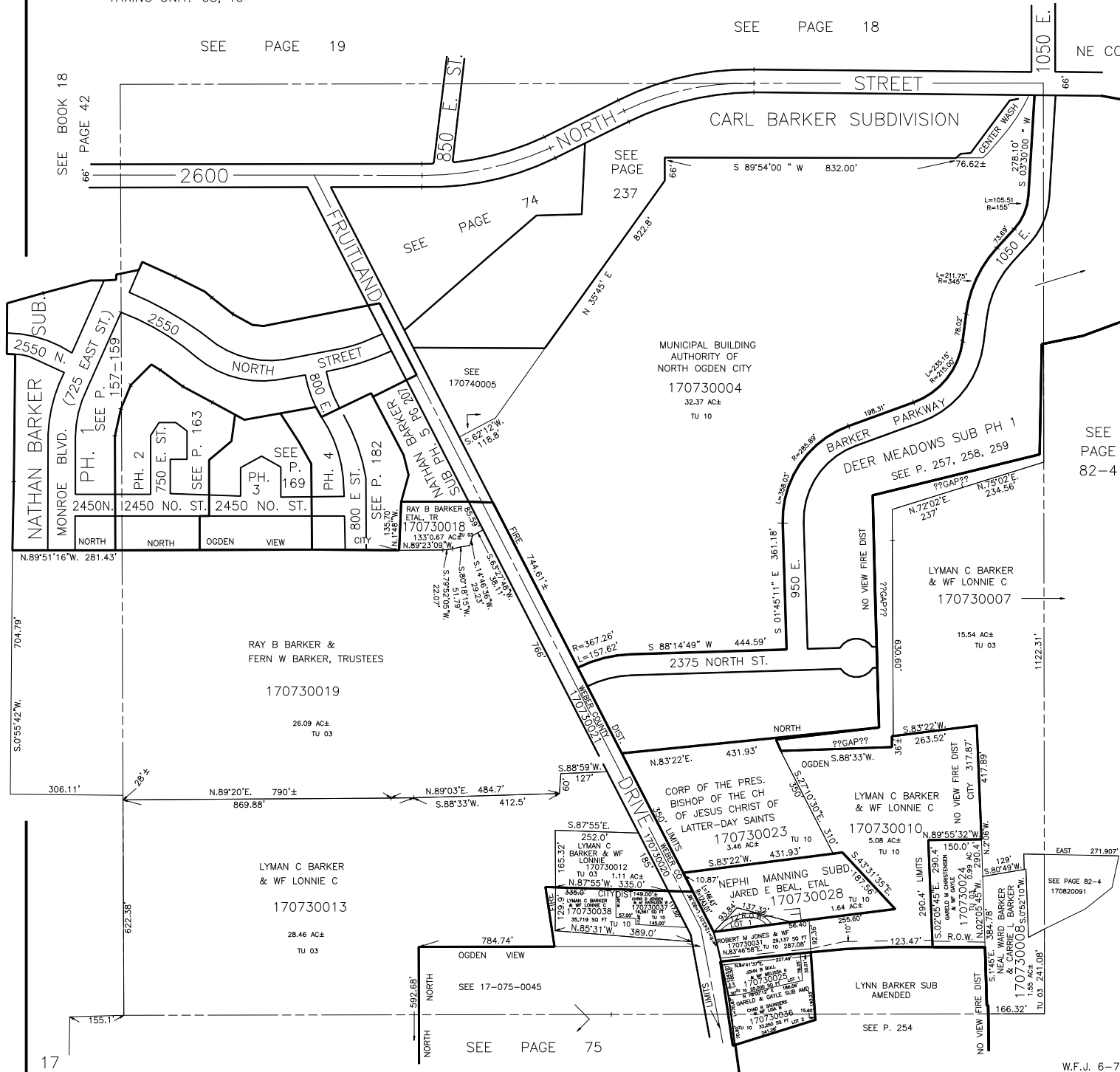
TAXING UNIT: 03, 10

SCALE 1" = 200'

SEE PAGE 18

SEE PAGE 19

NE COR SEC 33



SEE BOOK 18
PAGE 42

SEE PAGE 74

SEE PAGE 237

SEE PAGE 182

SEE PAGE 82-4

SEE PAGE 75